

Maple Syrup Digest

VOL. 16A, NO. 4

DECEMBER 2004



PRESRT STD
U.S. POSTAGE PAID
CANTERBURY, NH
PERMIT NO. 14

Return Service Requested

Maple Syrup Digest
PO Box 240
Canterbury, NH 03224



**Warmest
Holiday Greetings
from The Bacon Jug
Company!**

All of us at the Bacon Jug Company want to thank our loyal customers and send best wishes for a joyous Holiday Season.

Remember we are always ready to assist any sugarmaker develop their own private label Bacon Jug. After all you and your family put a lot of work and effort into making the maple syrup you are putting in a jug, why not put your own words and design on the jug?



The Bacon Jug Company
(a division of Gamber Container, Inc.)
46 N. Littleton Rd
Littleton, NH 03561
(603) 444-1050
(603)444-6659 fax
www.mclures.com
info@mclures.com



Seasons Greetings

from

CDL-DALLAIRE Maple Equipment &
MAPLE PRO INC.



DBA WATERLOO/SMALL USA



CDL is presenting IPL 4 Seasons (TM) tubing. Developed in 1997, the 4 Seasons tubing is a step up semi-rigid tubing. It's a 100% memory tubing i.e. it will not sag, it's like an elastic. The name 4 Seasons means that it can be installed even in the winter time. Extreme temperatures will not affect it. You have the choice of a 5, 10, or 15-year warranty. The warranty length depends on the amount of uv protection included in the tubing. All 4 Seasons tubing is FDA approved.



We also carry a complete line of mainlines. We have a super 125 psi blue translucent mainline. We also carry a black mainline 75 or super 125 psi with a very smooth white lining inside. It has a glass like finish so it's very easy to clean. All mainlines are FDA approved.



3478 Perley Road • Enosburg Falls, Vermont 05450

800-762-5587 • 802-933-8222

fax: 802-933-2666 e-mail: info@waterloosmallusa.com

www.waterloosmallusa.com

or

www.maplepro.com

MAPLE SYRUP DIGEST

Official publication of the
NORTH AMERICAN
MAPLE SYRUP COUNCIL

DIRECTORY

Published and Edited by:

ROY S. HUTCHINSON

P.O. BOX 240

CANTERBURY, NH 03224

Phone: 603-783-4468

Fax: 603-783-9953

Email: mapledigest@tds.net

Published four times a year

(Feb., June, Oct., Dec.)

Postage paid at: Canterbury, NH 03224

NAMSC COORDINATOR

Michael A. Girard. 860-658-5790

352 Firetown Rd., Simsbury, CT 06070

Email: mgirard@simscoft.com • Fax: 860-408-4667

FIELD EDITORS

Conn. John Trumbull—860-379-7312
84 Maillet Lane, New Hartford, CT 06057

Indiana Steve Deatline—765-874-2170
7773 S 100 East, Lynn, IN 47355

Maine Al Bolduc—207-265-2600
1100 Middle Rd., New Portland, ME 04961

Mass. James Graves—413-625-9066
R.D. 1, Shelburne Falls MA 01370

Michigan Betsy Carls—269-684-7836
297 Gumwood Rd., Niles, MI 49120

Minnesota Carl Vogt—612-425-3742
10304 94th Ave. No. Maple Grove, MN 55369

N.H. Barbara Lassonde—603-224-2452
79 Fisherville Road, Concord, NH 03303

N.Y. Mrs. Marion Wells—518-766-2375
550 Hoags Crs. Road, Nassau, NY 12123

Ohio Tom Hoffman—330-659-3061
P.O. Box 326, Bath, OH 44210

Ontario Bill Robinson—519-529-7857
RR 2, Auburn, Ontario, Canada N0M 1E0

Pennsylvania Jim Tice—570-549-5257
427 Tice Road, Mainesburg, PA 16932

Wisconsin Roland Jorns—920-868-3161
4518 Highway T, Egg Harbor, WI 54209

SUBSCRIPTION RATES

United States 1 year — \$5.00

Canada, **US funds:** 1 year — \$7.00

NORTH AMERICAN MAPLE SYRUP COUNCIL DIRECTORY OF OFFICERS

ROGER SAGE, President

4449 Sage Road, Warsaw, NY 14569

585-786-5684

ELIZABETH COLLINS, Vice President

3095 230th Street, Marshall, MN 56258

507-828-9215

JOE POLAK, Secretary-Treasurer

W1887 Robinson Dr., Merrill, WI 54452

715-536-7251

DIRECTORS

Ron Wenzel. 860-649-0841
522 East St., Hebron, CT 06248

Don Jewell. 765-583-4865
10577 E 450 North, Otterbein, IN 47970

Robert S. Smith. 207-474-3380
24 Bennett Ave., Skowhegan, ME 04976

Tom McCrumm 413-628-3268
755 Watson-Spruce Cmr Rd., Ashfield MA 01330

Jean Maday 517-645-7305
PO Box 245, Pottsville, MI 48876

Terry Stanley 320-943-2580
2981 No. Lake Miltona, Miltona, MN 56354

Roger St.-Amand 506-273-2179
500 California Sett Road,
California Sett., NB E7J 2N3

Hank Peterson. 603-432-8427
28 Peabody ROW, Londonderry, NH 03053

Avard Bentley 902-548-2973
12 Valley Rd., Westchester, N.S. B0M 2A0

Dick Schorr 513-489-3184
12041 Snider Rd., Cincinnati, OH 45249

Bill Robinson 519-529-7857
RR2, South St., Auburn, Ont. N0M 1E0

Jim Sampson 570-488-6833
RR2, Box 485, Honesdale, PA 18431

Luc Lussier 819-362-3241
2100 St. Laurent, Plessisville, Que. G6L 2Y8

Rick Marsh 802-644-2935
3929 Vt Rte. 15, Jeffersonville, VT 05464

Lyle Stockwell. 715-594-3632
N 3870 730th St., Ellsworth, WI 54011

DIGEST ADVERTISING RATES

2 Page Spread \$450.00

Full Page 240.00

1/2 Page Vert. or Horz. 135.00

Column Inch 19.00

Classified 70c per word

**COPY DEADLINE: First of the
month preceding date of issue**

**COVER: Grottoli's Sugarhouse,
Granville, New York.**

GREETINGS FROM YOUR PRESIDENT



Having just returned from the 45th Annual North American Maple Syrup Council meeting, I need to thank the Upper Hudson committee for doing a great job handling close to four hundred people while keeping the meetings and tours on schedule. The sugarcane tours were fine examples of maple lover's ingenuity. The committee also managed to keep the fall foliage at near peak color.

I want to thank all the delegates and other maple enthusiasts for attending and contributing to our meetings. We accomplished many things, including accepting the strategic plan for the Council. Mike Girard was appointed as the plan's coordinator to implement some of the proposals. We hope to have a website established soon. This will provide ready access to many people regarding what is going on with this organization.

Two additional persons were added to the research committee to help with pursuing monetary contributions for the research fund. Producers need to urge their container suppliers to actively collect funds for research. We need to keep up our own research efforts to help ensure quality maple products. We were pleased to welcome Steve Childs on his first workday as Maple Specialist for Cornell University. Steve, along with several other Cornell staff persons, should assure that the Cornell maple program is alive and well.

As winter approaches, the maple

season is just around the corner. Producers have had the opportunity to attend tubing seminars across the Northeast, learning new techniques to produce more and better maple syrup. Mark your calendars for the upcoming maple schools scheduled in your areas.

Happy holidays and good luck on the upcoming maple season is wished to all.

Sincerely,
Roger C. Sage, President


**CLUTE'S MAPLE
PRODUCTS**

** Leader and G.H. Grimm
Equipment & Supplies*

**Bacon Jugs*

Lane & Kathy Clute
405 Clute Road
Naples, NY 14512
(505) 374-6371

**PORTABLE
DIGITAL BAROMETER
WITH
BOILING POINT OF WATER**



**READ
BAROMETRIC
PRESSURE
AND
BOILING POINT
OF WATER
AT THE TOUCH
OF A BUTTON**

\$115.00

MARCLAND
Tel: 1(518)532-7922

IMSI NEWS

Attending a meeting in the Lake George, NY area is always a pleasure and this past October's international meetings were no different. Special thanks to the Upper Hudson (New York) Maple Producers for hosting such a great meeting. The tours were excellent as part of the New York fall tour and the facilities worked out fine. Sessions were well coordinated and the technical sessions provided lots of good maple knowledge. Congratulations to all the committee members for a job well done and a special thank you to Mike Hill the maple producer conference coordinator.

Next years host committee is hard at work to plan sessions for next October in Three Rivers, Quebec. We expect that the Quebec committee has lots of questions for past committees and I'm sure they will be quite innovative in their approach to planning an international conference. They have already promised us that the 2005 meetings will be in both English and French. There will be a bus tour, for folks from the south side of the border, to travel together to Quebec and avoid all the hassle of crossing those borders. More detail will be in later editions.

A major issue of discussion was the IMSI committee report recommending a standardized grading system for maple syrup on an international level and across state and provincial lines. Dave Chapeskie of Ontario has been heading up this committee for about 3 years to determine a way to make our grading systems less cumbersome to consumers. With several different systems in place in the U.S. and Canada, it is difficult for consumers to know what they are buying. The draft pro-

posal was accepted by both the IMSI and NAMSC boards of directors. That doesn't mean it is going to happen in the near future. Government entities will need to study the final proposal and in many cases laws will have to be changed. The key to these changes is not to change the grading system, but the descriptors of the grade. How many consumers really know what the word Amber means in a grade description. The plan is to find the words that will describe the grades by taste! The IMSI executive committee is to seek further information and come back to the next meeting of the board of directors with a better idea of what might be the way to go. If anyone has any questions or ideas, contact Dave Chapeskie at dave.chapeskie@omaf.gov.qc.ca. He can send you a complete copy of the proposal.

The newly elected President of the IMSI is Debbie Richards of Richards Maple Products in Chardon, Ohio. Vice President is Jerry Kless of the Citadelle Maple Syrup Producers Cooperative in Plessisville, Quebec. Gary Gaudette of Leader Evaporator Co. in St. Albans, VT was re-elected treasurer and Larry Myott was re-appointed Executive Secretary. Gerard Filion of Les Cruchons JUGS in Ontario will serve as past president.

The North American Maple Museum Hall of Fame committee announced that two new members are to be inducted on May 21, 2005. Hank Peterson of New Hampshire and Bill Robinson of Ontario have been selected. Congratulations.

For more information on the IMSI, contact Executive Secretary Larry Myott at 802.877.2250 or Larry.Myott@uvm.edu.



Richards Maple Products, Inc. of Chardon, Ohio was awarded the Gold Medal Plaque for their maple syrup entry in the Internatiopnal Maple Syrup Institute's International Maple Syrup Contest for packers. The awards were presented at the recent IMSI annual meeting banquet in Lake George, NY. The contest is for packers. Richard's Maple Products won in the Class 2 category for Gift and Specialty Distributors. Shown in this photo is (left to right) Larry Myott, Executive Secretary of the IMSI, Debbie Richards of Richards Maple Products receiving the award from Gary Gaudette, treasurer of the IMSI and President of Leader Evaporator Co. and IMSI president Gerard Filion of Les Cruchons JUGS, Inc. in Hawkesbury, Ontario. The winner of the Category 1, International Packers/Distributors, was Turkey Hill Sugarbush, Ltd. of Waterloo, Quebec. The award was received by company president Michael Herman. (Photo by George Cook, UVM Extension)



Russell Davenport of Shelburne Falls, Massachusetts was honored by the International Maple Syrup Institute at their annual meeting and banquet in Lake George, NY in October. Davenport, shown here with his wife Martha, was honored for outstanding service to the international maple industry. He was cited for his leadership in the American Maple Museum's Hall of Fame, and his leadership in developing the first edition of the Maple Syrup Producers Manual. Davenport has a long history of work with the industry in Massachusetts and he was honored with a life time membership for his efforts, several years ago. A life long sugarmaker, he has been a leader in technology implementation, marketing efforts and much more. For many years he and

his wife operated the sugarhouse in the Massachusetts building at Eastern States Exposition and he serves on the Massachusetts Department of Agriculture Advisory Committee. He has been active on many international maple committees over the years, including chair of the North American Maple Syrup Council for two years. The Davenports still sugar at their multi-generational dairy/maple farm in Shelburne Falls. Each spring they operate a maple restaurant on the farm with their family. (Photo by Larry Myott)

MY “THANK YOU” TO EVERYONE

I wish to express my sincerest thanks and appreciation for the recognition and words of remembrance that was bestowed on me and my wife, Martha, at the Lake George NAMSC and IMSI maple meeting. It was a complete and exhilarating surprise to me. The old saying “time flies” is so true as the next October meeting in Quebec will be the 40th consecutive Council Meeting we have attended.

My “thank you” to all involved. Many have been involved as long as I have, to name a few: Bob Coombs, Paul Richards, Ron Shaw and Gordon Gowen as well as those who have passed on — Adin Reynolds, Bob Lamb, Lloyd Sipple and Lin Lesure. They have all supported me all the way. One of the most rewarding projects was the production of the Maple Syrup Manual with the help of Randy Heigleman and Mel Koeling.

My work as factory representative for Sugarhill of Hillside Plastics with Dick and Janet Haas and their family is another pleasure that enabled me to meet so many maple people from all over the industry. Probably one of the most important endeavors is my involvement with the North American Maple Museum in Croghan, NY. Going back to the beginning, the support of Lloyd Sipple and Bob Lamb were so important to the success of the museum. The people of Croghan should be proud of their work. The Lyndakers and Warren Wells were involved in their success.

My involvement in the Mass. Department of Food and Agriculture has given me an important opportuni-

ty to work with the farmers and legislatures of our great state. Believe it or not, one of the greatest happenings was the Red Sox Pennant race. I have been a Red Sox fan all my life.

I want to thank the Mass. Maple Producers Association for their support. I have been involved in all phases of this organization. You say “How to meet people”? Become manager of the state maple booth at the Eastern States Exposition. Martha and I ran this Mass. booth for seven years.

Going back to the beginning, one name stands out — “Mr. Maple,” Lin Lesure of Ashfield, Mass. He literally took me under his wing and helped me in all phases of the success and the importance of maple in Mass. and the North American Maple Syrup Council.

None of this would have been possible without the support and encouragement of my family. My wife, Martha, deserves the most thanks. She has attended all meetings with me. My father, mother and children made it possible that I could take the time away from the farm. Milking 60 cows twice a day and all the crop growing involved takes someone every night and day to stay productive. Our son, Norman, and his wife, Lisa, have also made it possible to be away from the farm. This whole industry is one great family of maple people.

Again, my sincerest thanks for this recognition by the IMSI and NAMSC leaders. The support of Larry Myott has been a joy. Thank you, Larry and a special “thank you” to the Lynn Reynolds Family.

Sincerely and Thank You,
Russ Davenport

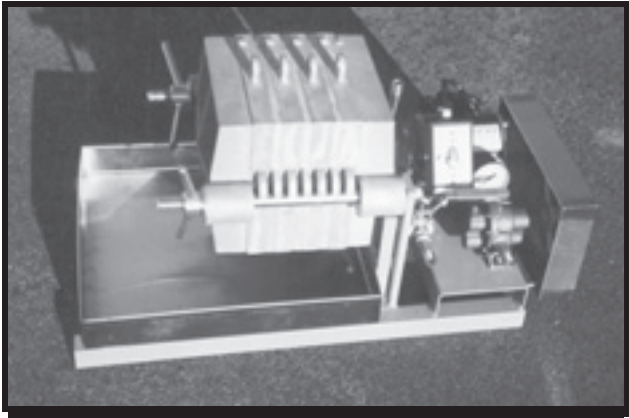
PRESSURE FILTER

From “Wes Fab”

Cost Effective Filter Press for the Medium Sized Producer

10” Short Stack Filter Press with Electric Motor Driven Pump

- Built for the Medium Sized Producer but designed to Expand.
- Uses standard 10” filter papers.
- Comes with the standard 10” filter press electric motor, gear pump, drip pan, & stand, so you can add more plates & frames as your production grows.
- Compact stand, lightweight aluminum plates & frames.
- Same high quality as our larger models.



Contact Us for your Special Filtering Requirements
or for the name of your local dealer



Wayne “Wes” E. Schoepke, Jr.
14420 12th Ave. Merrill, Wisconsin 54452
(715) 536-0501

EXPANDED MAPLE CONFERENCE ATTRACTS TOP PRESENTERS

**Topics Address All Levels
of Maple Producer Needs**

Touted as one of the maple industry's best conferences, the NYS Maple Producers Winter Conference has become one of the industry's hallmark events, attracting hundreds of maple enthusiasts from New York, surrounding states, and Canada. Scheduled for January 7th and 8th, 2005, the day-and-a-half event has something for every level of maple producer. The conference kicks off Friday evening with featured speaker Jim Trezise, Executive Director of the New York Wine and Grape Foundation. Relating developments in the grape industry to maple production, Mr. Trezise presents a look at the growth of the grape and wine industry, its impact on producers, and specific activities that enhance marketing. An industry trade show highlighting maple equipment, manufacturers, and vendors is open from 6:00 PM until 9:00 PM. More than 20 exhibitors are anticipated to display a complete line of maple equipment including evaporators, vacuum pumps, tubing supplies, and value-added processing equipment and supplies.

Saturday's program features 35 of the industry's leading maple experts from throughout the North America presenting some 40 different workshops. These focus on five major areas of emphasis: beginning sugarmakers, new and advanced technologies, marketing, value-added prod-

ucts, and forest management. During each of five time slots, up to ten individual workshops on each of the five areas are offered concurrently.

Under marketing, presentations will be conducted on Maple Agriculture Literacy, Giving Tours to Elementary Students, Maple Weekend Tips and Techniques, and Marketing Out of the Box. Value-added product workshops include making gift baskets, making maple lollipops, making nuts and maple dips, sugar coating maple candy, and producing extended shelf-life maple cream.

Forest management workshops focus on current research and recommendations for woodlot improvements. These include current studies such as "What's in My Sugarbush and Why Should I Care", "Evaluating Trees for Health and Vigor", "Sugarbush Fertilization", "Managing Trees for Sap Production", "Ginseng in Your Sugarbush", and "Working with Foresters in Your Sugarbush". With the rise in populations of forest tent caterpillars in some sugarbushes, a workshop on "Managing Forest Tent Caterpillars" is sure to be popular. "Advanced Tubing Installations", "New Developments in Sap Ladders and Vacuum Boosters", "Spile Size: When is Bigger Better" and "Tapping for Quality" are individual workshops that all emphasize improving sap production using tubing systems. These workshops apply the latest technologies to sap collection and vacuum systems and demonstrate how to apply these concepts to your existing sap collection systems.

Other technical workshops include research and development of micro-taps, operating reverse osmosis (R.O.) machines, UV light affects on

sap storage, controlling bacteria in tubing, and evaluating maple production energy use. New developments in air injection systems will also be presented from a producer's perspective and experiences using air injection systems in evaporators. For novice maple sugarmakers, workshops include basics of maple production, tubing installation basics, and sugaring for the novice backyard hobbyist.

Friday evening's program is \$5.00 per person advanced, \$10.00 at-the-door and will include light snacks. Saturday's conference registration is \$20.00 per person advanced and \$30.00 at-the-door and includes morning refreshments and buffet luncheon. Saturday's trade show opens at 8:00 AM with workshops starting at 9:00AM. Advanced reservations may be made by mailing name(s) of conference participants, along with registration fees, and must be received by December 15th; no refunds will be given. Checks may be made payable to: V.V.S. FFA and sent to V.V.S. FFA, State Route 31, Verona, NY 13478.

Held at the Vernon-Verona-Sherrill (V.V.S.) High School, Verona, NY, the conference is sponsored by the V.V.S. FFA in conjunction with the New York State Maple Producers Association. The V.V.S. High School is located between Utica and Syracuse, NY on State Rt. 31 just 2 minutes from NYS Thruway Exit 33. Overnight accommodations are within five minutes of conference site. More information on conference topics and presenters, contact V.V.S. FFA advisor Keith Schiebel at (315) 829-2520 ext. 262, email at kschiebel@vvs-csd-high.moric.org, or visit the school's website at: www.vvs-centralschools.org.

Maple Syrup Equipment & Supplies



- * Come browse in our fully stocked showroom
- * Leader-Grimm Distributor
- * Evaporators in stock
- * MARCLAND Draw-Offs
- * Lamb tubing & fittings
- * Sugar Hill jugs
- * UPS daily

"We are sugarmakers too!
Come visit with us!"

It's worth your trip to

Countryside Hardware

PO Box 409, Albany St., DeRuyter, NY 13052

Phone: 315/852-3326

FAX: 315/852-1104

www.countrysidehardware.com

Hours: Mon. - Fri. 8:00 - 5:00

Sat. 8:00 to 4:00





10th Annual New York Maple Producers Winter Conference

January 7th & 8th, 2005 8:45 AM to 4:30 PM at the Vernon-Verona-Sherrill High School, Verona, NY

Hosted by Vernon-Verona-Sherrill FFA Youth Organization in conjunction with NYSMPA

Registration – V.V.S. High School Lobby -- Maple Trade Show open

8:00 – 9:00
9:05 – 9:55

- A. Making Extended Shelf Life Maple Cream – *Lyle Merle, Merle Maple Farm, Attica, NY*
- B. Making Maple Baskets – *Karen Zaleski, Ben and Judy's Sugarhouse, W. Edmeston NY*
- C. Tubing Installation Basics -- *Glen Goodrich, Goodrich's Maple Farm, Cabot, VT*
- D. Air Injection: A Producer's Perspective – *Ben Benjamin, Ben and Judy's Sugarhouse, W. Edmeston NY*
- E. Spile Size: When is Bigger Better? – *Brian Chabot, Cornell University, Ithaca, NY*
- F. Off Flavors in Maple Syrup -- *Henry Marckres, Vermont Department of Agriculture, Montpelier, VT*
- G. Where do we stand? Where are we going?: Insights from Cornell University's Study of Maple Producers
Steven Wolf and Louise Buck, Department of Natural Resources, Cornell University

10:00 – 10:50

- H. Understanding Vacuum and Vacuum Systems -- *Brad Gillilan, Leader Evaporator, St. Albans VT*
- I. What's in My Sugarbush and Why Should I Care? – *Peter Smallidge, Arnot Forest, Ithaca, NY*
- J. Maple Queen Contest (9:00 AM – Noon) -- *Laurie Jean Fanfarillo, 2000 NYS Maple Queen, Rome NY*
- A. Making Maple Cream for the Hobbyist – *Dean and Ruth Delavan Delavan Maple Farms Cincinnatus NY*
- B. We Found Out What Your Maple Customer Wants from You -- *Jim Ochterski, Cornell Coop. Ext. of Schuyler Co*
- C. New Maple Food Products of Cornell Food Venture Center -- *Olga Padilla-Zakour, Cornell Univ, Geneva, NY*
- D. New Developments in Sap Ladders and Vacuum Boosters – *Brad Gillilan, Leader Evaporator, St. Albans VT*
- E. Update on Maple Micro Spouts – *Bob White, MicroSpouts, Underhill, VT*
- F. Filtering Maple Syrup – TBA
- G. Elementary Bus Tours of the Sugarhouse – *Leonard Hamley, Hamley's Maple, Barton, NY*
- H. Advanced Tubing and Vacuum Principles – *Glen Goodrich, Goodrich's Maple Farm, Cabot, VT*
- I. Evaluating Trees for Health and Vigor – *Rebecca Hargrave, Cornell Cooperative Ext of Chenango County*
- J. V.V.S. FFA Maple Market Tour – *Tour of school's retail maple market outlet*

10:55 – 12:00

General Maple Assembly --

12:00 – 1:15

Exhibitor's Luncheon and Trade Show

1:20 – 2:10

- A. Sugar Coating Maple Sugar – *Greg Zimpfer, Zimpfer Maple Products, Attica, NY*
- B. Marketing Out of the Box – *Michele Ledoux, Cornell Cooperative Extension of Lewis Co., Lowville, NY*
- C. New Developments in Sap Ladders and Vacuum Boosters – *Brad Gillilan, Leader Evaporator, St. Albans VT*
- D. UV Effects on Sap Storage -- *Randy Worobo, New York State Agricultural Experiment Station, Geneva, NY*
- E. Tubing Installation Basics -- *Glen Goodrich, Goodrich's Maple Farm, Cabot, VT*
- F. Air Injection: A Producer's Perspective – *Ben Benjamin, Ben and Judy's Sugarhouse, W. Edmeston NY*
- G. Evaluating Maple Production Energy Use – *Steve Childs, NY Maple Ext. Specialist, Cornell Univ., Ithaca, NY*
- H. Quality Control from Sap to Syrup -- *Henry Marckres, Vermont Department of Agriculture, Montpelier, VT*
- I. Sugarbush Fertilization – *Tim Wilmot, Univer. Of Vermont, Proctor Research Cir. Underhill, VT*
- J. Managing Sugar Maple Trees for Sap Production– *John Clancy, NYS DEC, Cortland, NY*
- K. VVS FFA Maple Sap House Tour – *Members of the V.V.S. FFA*

2:15 – 3:05

- A. Making Maple Lollipops – *Dwayne and MaryLee Hill, Shaver-Hill Farm, Harpersfield NY*
- B. Making Maple Baskets – *Karen Zaleski, Ben and Judy's Sugarhouse, W. Edmeston NY*
- C. Sugaring for the Novice Backyard Hobbyist – *Sumner Dole, Univ. of New Hampshire Coop Ext, Laconia, NH*
- D. Advanced Tubing and Vacuum Principles – *Glen Goodrich, Goodrich's Maple Farm, Cabot, VT*
- E. Weather and When to Tap -- *Brian Chabot, Cornell University, Ithaca, NY*
- F. Update on Maple Micro Spouts – Tap of the Future – *Bob White, MicroSpouts, Underhill, VT*
- G. Maple Weekend Tips and Techniques for Maple Producers – *Greg Zimpfer, State Coordinator, Attica, NY*
- H. Where do we stand? Where are we going?: Insights from Cornell University's study of maple producers.
Steven Wolf and Louise Buck, Department of Natural Resources, Cornell University, Ithaca, NY

3:10 – 4:00

- I. Money from More than Maple - Ginseng in Your Sugarbush -- *Bob Beyfuss, Cornell Coop. Ext. of Greene Co.*
- J. Managing Tent Caterpillars in Your Sugarbush – *Doug Allen, College of Environmental Science, Syracuse, NY*
- A. Maple Nuts and Dip – *David Campbell, Mapleland Farms, Salem, NY*
- B. Marketing Out of the Box – *Michele Ledoux, Cornell Cooperative Extension of Lewis Co., Lowville, NY*
- C. Tapping for Quality – *Steve Childs, NY State Maple Extension Specialist, Cornell University, Ithaca, NY*
- D. RO Operation and Maintenance – *Doug Wolcott, Wolcott Maple Syrup and Equip, Dale, NY*
- E. Bacteria in Tubing – *Randy Worobo, New York State Agricultural Experiment Station, Geneva, NY*
- F. Spile Size: When is Bigger Better? – *Brian Chabot, Cornell University, Ithaca, NY*
- G. New Developments in Sap Ladders and Vacuum Boosters – *Brad Gillilan, Leader Evaporator, St. Albans VT*
- H. Quality Control from Sap to Syrup -- *Henry Marckres, Vermont Department of Agriculture, Montpelier, VT*
- I. Maple Promotion: It's All Elementary – *Pat LaPoint, Cornell Cooperative of Genesee Count, Batavia, NY*
- J. Working with Foresters in Your Sugarbush -- *Jim Ochterski, Cornell Cooperative Ext. of Schuyler Co.*

4:10 – 4:30

Conference Wrap-up and Evaluation Door Prizes -- Thank you for Participating!

Pre- Registration: \$20.00 (By December 15th)

At-the-door: \$30.00

Keith Schiebel, FFA Advisor, Vernon-Verona-Sherrill Central School Route 31, Verona, NY 13478

School: (315) 829-2520 Fax: (315) 829-4465 Email: kschiebel@vvs-csd-high.moric.org



WORTHINGTON, MA HOME BURNS

Fire claims couple's property for second time in four years

By Sean Reagan, Daily Hampshire Gazette

A Worthington family lost their home Monday morning when a fast-moving fire engulfed the house in flames leaving nothing but charred wreckage by noon. The fire started in Marian Welch's soap-making room where she said she was melting wax to make candles. Welch was the only person home at the time and was able to leave the house safely.

It is the second time in four years that J.P. and Marian Welch, who own and operate Justamere Tree Farm, have been the victims of fire. In 2000, their maple sugar house burned to the ground while they were making syrup. That structure was rebuilt.

NOTE: J.P. Welch is a former Mass Maple Association board member and association President. Four years ago he suffered a total loss of their sugarhouse in a fire in the middle of boiling season. He was so grateful of the local volunteer fire department that shortly after his sugarhouse fire, J.P. joined the Worthington Volunteer Fire Department. Regrettably, this time he had to fight a house fire at his own residence.

Donations to help them out can be sent c/o the Worthington Fire Department, Worthington, MA 01098.

Built to Last a Lifetime!

**Manufacturers of Professional & Hobby Evaporators
Suppliers of R.O. Machines, Containers, and Maple Supplies**

New Products

- Air Injectors • Maple Soap with Five Shapes • Maple Tea
- Multi-use Evaporator • Anti-Scorch Pan System • New Glass Bottles

Six Models of Hobby Evaporators

- 16" x 40" Multi-Use Model – 20-50 taps
- 24" x 36" Backyard Model – 25-75 taps
- 20" x 60" Junior Model – 50-75 taps
- 20" x 66" Pleasure Model – 50-250 taps
- 24" x 66" Thrifty Model – 100-250 taps
- 24" x 72" Hobbist Delight Model – 100-400 taps



Catalog & Price List Available Upon Request

DEALERS WANTED

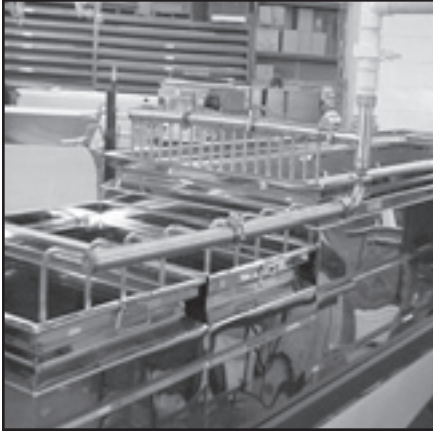
Algier Evaporator Company, Inc.

555 Route 78, Swanton, VT 05488

Tel. (802) 868-9289 Fax (802) 868-4113 E-mail small@sover.net

www.algierevaporator.com

**D.G. USA, INC.
IS NOW ACCEPTING ORDERS
FOR THE
NEW DOMINION & GRIMM
AIR INJECTOR
‘BUBBLER’**



***WILL CUSTOMIZE
TO FIT ANY BRAND
EVAPORATOR PAN***



**CALL 802-893-3487
FOR PRICING OR
TO PLACE AN ORDER
TODAY!**

**D.G. USA, INC.
164 YANKEE PARK RD.
FAIRFAX, VERMONT 05454**

**802-893-3487
802-524-9643 FAX**

**NEW GLASS CONTAINERS
ALSO AVAILABLE
TODAY!**



FERTILIZATION OF SUGARBUSHES PART II. SAP VOLUME AND SWEETNESS

*Timothy Perkins, Timothy Wilmot,
and Marla Zando
Proctor Maple Research Center
University of Vermont
Underhill Ctr., Vermont 05490*

BACKGROUND

In previous articles we described the nutrition of sugar maple (Wilmot 2000) and an experiment to examine the physiological effects of fertilization (Perkins et al. 2004). In this segment, we describe the effects of fertilization and liming on sugar production in maple stands.

While several studies have shown that nutrient deficiencies can impact stand growth and health, few studies have examined the results of fertilization (see review in previous article). Little research has been published on the effects of fertilization on maple sap production (although see Barry and Robichaud 1996).

It is important to keep in mind that not all sites are suitable for fertilization. Sugar maples may respond when a soil amendment corrects a deficiency, but are not likely to respond when soil nutrition is already adequate. Fertilization should not take the place of proper stand management, and should not be considered a remedy when the site is suffering from overtapping, logging damage, or improper growing conditions such as wet soil. Crowded

stands will probably benefit more from thinning than fertilization. Adding the wrong type of fertilizer may only exacerbate already existing nutrient deficiencies. Nevertheless, a proper fertilization regime applied correctly may improve stand performance (Wilmot and Perkins 2004).

STUDY AREA AND FERTILIZATION TREATMENT

As in our previous report, the primary study site (Clark) was located adjacent to the Proctor Maple Research Center in Underhill Center, Vermont with a western exposure on the slope of Mount Mansfield in the Green Mountains at approximately 1350 ft elevation. The site was a former sugarbush that had been abandoned several decades ago. While the majority of the stand was composed of sugar maple, some yellow birch, beech, and hemlock also occupied the site. The majority of trees were > 100 years old and visibly healthy, with > 75% intact crowns.

Ten irregular plots consisting of 10-14 taps each were delineated within the study area and randomly assigned to one of five treatment groups, with two replicate plots per treatment. A buffer strip of varying width encircled each plot. Treatments consisted of: 1) control plots (no fertilization), 2) a commercial 10:10:10 NPK (nitrogen, phosphorus, potassium) at a rate of 270 lbs/acre, 3) a cation mix, consisting of potassium sulfate, calcitic lime, and Epsom salt (designed to supply the soil with potassium, calcium and magnesium) at combined rate of 400 lbs/acre, 4) the cation mix plus 10:10:10 at the rates given above, and 5) cations

plus supplemental lime at 3000 lbs/acre. All treatments were applied in May 1999 by hand as a single dose spread evenly throughout the plots.

METHODS

In late 1997, rigid polyethylene tubing was run between the dominant trees in all plots, which were tapped with one or two spouts (7/16") depending on tree diameter. At the base of each plot, the tubing extended to the bottom of the slope, where a small shed was located which served as a collection point. Trees were tapped at the start of each sugaring season (usually late-February) from 1998 to 2003. For the first season, sap flowed into 30 gallon containers within the shed. Depth was measured periodically and converted to sap volume. Sap sweetness was monitored at the same time with a handheld refractometer. Starting in the second season (1998), a flow-through sap volume and sweetness monitoring system was installed (Figure 1). This system consisted of ten 6" diameter PVC vessels, one for each of the separate plots. A ball valve allowed sap to flow directly into the vessel, where a pressure sensor connected to a datalogger monitored sap depth. When a preset sap level was reached in any vessel, the datalogger recorded the sap volume and triggered the ball valve to rotate and empty all the vessels, after which the valves rotated into the normal position so that the vessels could refill. Periodically, another small valve would open on each individual vessel and allow a small amount of sap to run through an automatic refractometer where sugar content was meas-

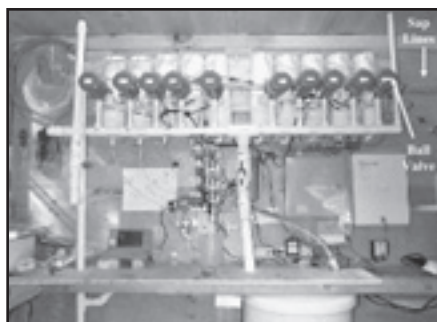


Figure 1. The inside of the Clark site shed showing the sap volume and sugar content monitoring system. Sap from each plot flowed into the shed on the upper right side, through the ball valves and into one of the PVC vessels. When full, depth was measured by a pressure sensor near the bottom of each vessel, and the ball valve turned to allow sap to drain through the pipes into the storage tank at the bottom of this photo. The entire system was operated via a datalogger and relays. A portable computer was used to periodically retrieve the data.

ured and recorded. Sap depth and sugar content was checked on occasion using a ruler and handheld refractometer to ensure that the system was functioning correctly. The system was fully automated, and typically would run the entire sap season without problems. The data were downloaded from the datalogger every few days throughout a season onto a portable computer.

Sugar production from each plot was calculated by multiplying sap volume and sugar content and totaling for the season. Prior to any fertilization we measured sugar production for two seasons to allow the cross-calibration of individual plots, so that we could separate changes in sap production resulting from fertilization with those due to seasonal influences. Sugar production was then measured for four years following fer-

tilization. Sugar production for each treatment was averaged for the two replicate plots and compared to unfertilized control plots.

RESULTS

Over the entire time period and all plots, trees averaged 2.8 Brix sugar content produced an average of 8.2 gallons of sap per tap per year.

All fertilization and liming treatments resulted in increased sugar production at this site. Sugar production in general resulted from increases in sap volume, with a small portion of the increase being attributable to changes in sap sugar content. Sugar production in the first season post-fertilization showed a very modest increase; however, by the second and third years after fertilization, sap production was typically 15% above that of control plots (Figure 2). By the fourth year, sugar production had started to decrease. We project, based upon previous studies of fertilization on maple stands (Wilmot et al., 1996, Wilmot and Perkins, 2004),

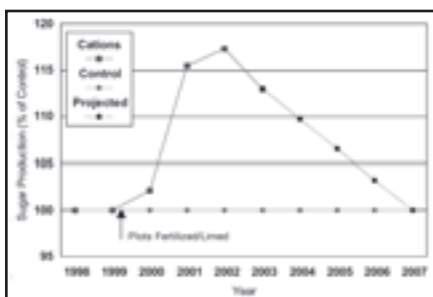


Figure 2. Time course of cation fertilization effects on sugar production (sap production multiplies by sugar content). All results are standardized to unfertilized control plots (diamonds at 100%). Actual measured production from 2000-2003 appears as squares with a solid line, Circles with the dashed line are projected results.

that the effects of fertilization will gradually taper off, with the increases in sugar production from a single application lasting about seven years.

Although all fertilization and liming produced positive results, there were slight differences in total sugar production depending upon the treatment. Whereas most treatments showed about a 9-10% increase in sugar production, the combination of cations plus liming yielded an increase of 5.6%, mainly because of a small decrease in sap sugar content which was partially offset by increased volume.

An economic analysis based upon the cost of the fertilizer, but not including labor, shows that the known increase in sugar production over four years (not including the projected increase) yields approximately 8.6% in additional profits per year (Figure 3).

DISCUSSION

While fertilization and liming are not cure-alls for low production, soil amendments can improve the nutrition of trees on marginal to moderately fertile sites. In this study we present evidence that improved nutrition

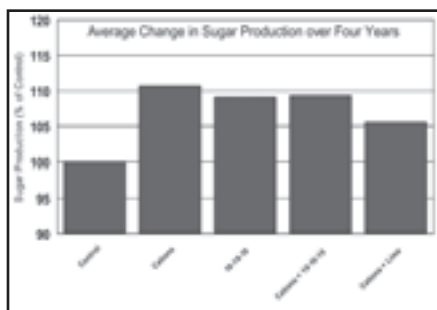


Figure 3. Average effects of fertilization on sugar production (sap volume x sap sugar content) in the Clark study site.

can lead to improved sugar production. Proper sugarbush management, including regular thinning, control of defoliating insects, and minimizing human impacts on the stand remain necessary tools to improve sugar production in maple stands. However, in sites where soils may lack adequate levels or the proper balance of nutrients, or stands where soil pH is low enough to impede proper nutrient uptake, a fertilization program using appropriate methods may improve sugar production.

LITERATURE CITED

Barry, R. and Robichaud, E 1996. Effects of maple fertilization on sugar production. Report to the North American Maple Syrup Research Council and the New Brunswick Maple Producers Coop. 27p.

Perkins, T.D, T.R. Wilmot, and M. Zando. 2004. Fertilization of sugarbushes - Part 1. physiological effects. Maple Syrup Dig. 16A:23-27.

Wilmot, T.R., Ellsworth, D.S. and Tyree, M.T. 1995. Relationships among crown

condition, growth, and stand nutrition in seven northern Vermont sugarbushes. Can. J. For. Res. 25:386-397.

Wilmot, T.R., Ellsworth, D.S. and Tyree, M.T. 1996. Base cation fertilization and liming effects on nutrition and growth of Vermont sugar maple stands. For. Ecol. Manage. 84:123-134.

Wilmot, T.R. 2000. A survey of sugar maple nutrition in Vermont and its implications for the fertilization of sugar maple stands. Maple Syrup Digest 12A:18-21.

Wilmot and Perkins. 2004. Fertilizing a sugarbush. University of Vermont, Agricultural Experiment Station Miscellaneous Publication, Burlington, VT.

ACKNOWLEDGEMENTS

This research was funded by: The Freeman Foundation, the North American Maple Syrup Council, and the U.S. Environmental Protection Agency. Thanks to Sumner Williams, Brian Stowe, Mark Isselhardt and Abby van den Berg for their able assistance in conducting this work. We gratefully acknowledge the generosity of the Clark family for allowing us to use their land and trees for this work.

Unlimited sizes and print colors.

CROWN LABELS

The more you BUY — The more you SAVE.

250-2000 Labels — Save 10% • 3,000-10,000 Labels — Save 15%

Call, Write, or Fax for Full Color Samples and Prices for

Syrup • Cream • Sugar • Candy • Novelties • Tea

Wm. L. Chalmer
P.O. Box 21545 or 2121 S. Green Road
Cleveland, OH 44121

800/847-6016
216/291-4897
FAX 216/291-4897



*Our 43rd Year Furnishing Labels for
Maple Producers in the U.S. and Canada*



New England Container Company

HOME OF THE FAMOUS CABIN CAN

- Low, Factory-Direct Prices
- Safe, Lead-Free Cans
- Popular & Convenient Sizes
- Tin Construction Protects Color, Flavor & Grade
- All Cans In Stock Year Round



**CABIN CANS AVAILABLE IN
250 ML & 500 ML SIZES**



GALLONS • HALF GALLONS • QUARTS • PINTS • HALF PINTS



**All Containers
are properly
sized for Hot Pack maple
syrup
- NOT OVERSIZED!**

75 Jonergin Drive • Swanton, VT 05488 • 802/868-3171

**2004 NORTH AMERICAN
MAPLE SYRUP COUNCIL
45th ANNUAL MEETING AND CONVENTION
OCTOBER 17th-20th, 2004
Lake George, New York**

The 45th Annual Meeting of the North American Maple Syrup Council (NAMSC) was hosted by the Upper Hudson Maple Producers Association and was held at the Roaring Brook Conference Center in Lake George, New York.

The four day conference began Sunday, October 17th. Extension maple specialists, International Maple Syrup Institute (IMSI) directors, and NAMSC delegates and officers began the conference with planning sessions on Sunday.

President Roger Sage welcomed delegates, alternates and participants to the 45th Annual Meeting of the NAMSC. Secretary, Joe Polak, read the roll call of delegates and alternates from member states and provinces.

Delegates and alternates present for the meeting included: Ron Wenzel, Del., Ray Kasulaitus, Alt., Connecticut; Don Jewell, Del., David Hamilton, Alt., Indiana; Tom McCrumm, Del, Jim Graves, Alt., Massachusetts; Robert Smith, Del., Jeremy Steves, Alt., Maine; Jean Maday, Del., Larry Haigh, Alt., Michigan; Terry Stanley, Del., Beth Collins, Alt., Minnesota; Roger St. Amand, Del., David Briggs, Alt., New Brunswick; Hank Peterson, Del., Bill Eva, Alt., New Hampshire; Avard Bentley, Del., N.S. Roger Sage, Del., Warren Wells, Alt., New York; Dick Schorr, Del., Doug Fitch, Alt., Ohio; Bill Robinson, Del., Vernon Wheeler, Alt., Ontario; Jim Sampson, Del., Barbara Kinnan, Alt., Pennsylvania; Luc Lussier, Del., Rene Ares, Alt., Quebec; Rick Marsh, Del., Gerard Stevens, Alt., Vermont; and Lyle Stockwell, Del., Joe Polak, Alt., Wisconsin. All member provinces and states were present.

Minutes of the 44th Annual Meeting held in Truro, Nova Scotia were presented and amended.

Motion: Approve minutes of 44th Annual Meeting

Proposed by: Avard Bentley

Seconded by: Jeremy Steeves

Action: Passed

President Roger Sage appointed delegates to committees:

Bylaws: Beth Collins, Chair; Michael Girard, Luc Lussier, Jean Maday and Bill Eva.

Nominating: Luc Lussier, Hank Peterson and Ron Wenzel.

Audit: Beth Collins, Avard Bentley and Dick Schorr.

The Treasurer's report was presented by Joe Polak. Current monies in checking account are \$16,428.21. Two certificates of deposit were opened. \$4000.00 was put into the Lamb Honorary Fund and \$46,000.00 was put into the Willits Honorary Fund.

Motion: Accept treasurer's report as presented by Joe Polak.

Proposed by: Beth Collins

Seconded by: Ron Wenzel

Action: Passed

Motion: Treasurer to determine annual operating expense and invest remainder of cash in short term CD.

Proposed by: Beth Collins

Seconded by: Ron Wenzel

Action: Passed

The Maple Research proposals with recommendations for 2005 were presented by Richard Norman.

Title	Amount Requested	Recommended Amount
Evaluation of Sap Filters Ontario Ministry of Agriculture	\$5,000.00	\$4,000.00
Use of Defoamers in the Maple Industry Ontario Ministry of Agriculture	\$7,000.00	\$6,000.00
Improving Growth of Sugar Maple Cornell University, N.Y.	\$5,250.00	\$4,250.00
Effects of Three Sugar Bush Management Techniques On Major Forest Insect Disease Pests University of Vermont	\$9,675.00	\$6,700.00
		<hr/> \$20,950.00

Motion: Accept the recommendation of the Research Committee as presented.

Proposed by: Jean Maday

Seconded by: Rick Marsh

Action: Passed

Michael Girard, Treasurer of the NAMSC Research fund reported net income at FYE 8/31/04 was less than the same periods for the two previous years. The drop in income and increase in expenses resulted in a net loss this year of (\$4,560.65).

Contributions to Research Fund were considerably less this year resulting in a reduced amount available to fund research proposals.

President Roger Sage appointed Eric Randall and Kay Carroll to the Research Committee. Kay will also assume the duties of treasurer from Michael Girard. Current members are: Richard Norman, Chair; Luc Lussier, Warren Wells, Eric Randall and Kay Carroll.

Report by Roy Hutchinson, Maple Digest Editor showed balance of

\$12,239.63. This year a profit of \$2,100.36 was reported. Roy has been editor of the Maple digest 14 years. Current costs are less than 1990.

Randy Heiligmann reported the updated Maple Manual will be printed in June 2005. It will be in color with a larger font and will have approximately 250 pages. There are 18 authors working on this rewrite. The cost this time will be approximately \$15.00. Randy recognized Tom McCrumm as the first author to finish the chapter he reviewed.

Michael Girard presented the new NAMSC Strategic Plan to the Council. This project was initiated in 2000 at the Burlington, VT Annual Meeting. Luc Lussier chaired the ad hoc committee, which began its work in North Conway, NH in 2002. At the October 2003 Annual Meeting in Truro, Nova Scotia, the Officers, Delegates and Alternates held a planning session to discuss the committee's initiatives. The long list of comments and suggestions were discussed and condensed into what they felt warranted future consideration. Their efforts are represented in the Plan presented at this meeting.

The Strategic Plan dated October 12, 2004 includes introductory statements, history and the present operations of the Council. There are specific planning areas that are addressed and they are:

1. Administration
2. Communication and Education,

 <p>STEADY PROFITS! SAP STEADY UV MAPLE SAP STERILIZER</p> <p>Kills bacteria in maple sap! Produce more Grade A product for LESS</p> <ul style="list-style-type: none">• Tests at Cornell University show 100% kill of all bacteria present at time of treatment• Flow rate of 15 GPM - 900 GPH• Self contained unit with built in supply pump• Uses 115V current - draws 15AMP• Compact - 24"x24" <p>Look for our new model! "For Vacuum Systems" Walimount, uses your pump, 110 volt, high intensity lamps, same outstanding results as our original machine! Up to 30 G.P.M., 1" inlet and outlet can be setup to turn on & off with your vacuum system.</p>  <p>1954 - 2004 ... CELEBRATING 50 YEARS</p>	<p>The LOG HANDLER from OESCO, Inc.</p>  <p>Log Handler with Goldoni Maxter & Tayfun winch</p> <ul style="list-style-type: none">• 900# Lift capacity• 4000# Load capacity• 350° Boom rotation• 33 HP diesel• Runs off tractor hydraulics• Quick conversion from log handler to Transcar 3-way dump  <p>Hardy 850ST Log Loader & Goldoni Transcar Utility Vehicle</p> <p>OESCO, Inc. • P.O. Box 540 • Conway, MA 01341</p> <p>800-634-5557 • 413-369-4335 • FAX 413-369-4431 • www.oescoinc.com • info@oescoinc.com</p>
---	--

3. Financial Planning
4. Research Funding.

Goals and Objectives are listed for each of these four sections. The suggested action steps are divided between short and long range with the differentiation determined by timing, level of priority and/or available resources.

The plan states the NAMSC Mission Statement: The NAMSC is an international network of maple syrup producer associations, business leaders and affiliated groups brought together to share their common interests, experience and knowledge for the advancement and improvement of the maple industry.

Vision Statement is as follows: The NAMSC will provide and maintain a neutral forum for its member States and Provinces, associates, affiliates and other members to exchange information; promote research; protect and improve product standards and production methods; and to enhance the marketing and promotion of quality pure maple syrup products. The Council will continue to enhance its position as a leader in education and general resource for the maple industry in the United States and Canada.

The Strategic Plan will be reviewed and updated annually.

Motion: Accept the Strategic Plan as presented.

Proposed by: Dick Schorr

Seconded by: Tom McCrumm

Action: Passed



Maple Syrup Grading Meter HI 95759K

ISO 9001 Certified

- Affordable for All Producers
- Digital Readout
- Easy to Use!

HANNA[®]
instruments
Agricultural Division

Maple Refractometer Included!

For more information, contact HANNA Instruments at: (877) 694-2662 • www.hannainst.com

Available through HANNA authorized independent distributors.

Roger Sage appointed Michael Girard as Plan Coordinator.

Current members of Strategic Plan Committee are: Michael Girard, Chair; Roger Sage, (President); Elizabeth Collins, (Vice President); Luc Lussier, (Past President); Mary Fogel Douglas, Administration; Roy Hutchinson and Douglas Rose, Communication and Education; Joe Polak, Financial Planning; Richard Norman and Hank Peterson, Funding Research.

The Maple Museum and Hall of Fame report was presented by Russ Davenport. The Hall of Fame began in 1977 with Fred Winch as the first inductee. Since then two or three have been inducted per year. Committee member are: Russ Davenport, Chair, Gordon Gowen, Bob Combs, Paul Richards, Lew Staats, Bob Smith, Richard Norman, Avard Bentley and Ron Shaw.

Brian Chabot reported the Maple Specialists short term goal is to coordinate planning of research. Discussion included funding issues of research. Planned projects include: effectiveness of U.V. units, forest management for maple, sap filters and plantation work.

Cornell University, New York, has hired Steve Childs as Maple Specialist. His office will be at the Ithaca Campus.

Motion: Accept treasurer's report of NAMSC as presented by Joe Polak treasurer's report of Reserch Committee by Michael Girard, and financial report of

Call or
write for a
FREE
Catalogue!



All Prices
in Low, Low
Canadian
Dollars

"Where Quality and Service is a Tradition"

***New & Used Equipment
Complete Line of Supplies***

RR #1, Oro Station, Ontario L0L 2E0

Tel: 705-487-3331 • Fax: 705-487-0460

Email: sales@atkinsonmaple.com

A Division of Davtech Industries Ltd.

"WE SHIP DAILY"

Maple Digest by Roy Hutchinson.

Proposed by: Beth Collins

Seconded by: Ron Wenzel

Action: Passed

Motion: Treasurer to determine annual operating expense and invest remainder of cash in short term CD.

Proposed by: Beth Collins

Seconded by: Ron Wenzel

Action: Passed

Motion: Transfer interest of Willits Honorary Fund to general fund for helping to fund the Maple Museum and transfer interest of Lamb Honorary Fund to general fund for helping to fund recognition awards presented at annual meeting.

Proposed by: Beth Collins

Seconded by: Ron Wenzel

Action: Passed

Luc Lussier, Hank Peterson and Ron Wenzel of the Nominating Committee recommended reelection of President, Vice President and Secretary/Treasurer.

Hank Peterson, Chair of the nominating committee recommended changes to the Life and Associate Member lists.

Motion: Roy Hutchinson is to be added and Sherb Doubleday and Walter Humphreys are to be removed from the Life Members. All Associate Members

Syrup Bottles and Jugs



RICHARDS PACKAGING INC.

Dartmouth
Tel. 902-468-8211

Montreal
Tel. 514-697-8690

Quebec
Tel. 418-682-5002

Toronto
Tel. 905-624-3391

dartmouth@richardspackaging.com
quebec@richardspackaging.com

mtisales@richardspackaging.com
tosales@richardspackaging.com

Web Catalogue : www.richardspackaging.com

with terms that expire in 2004 are recommended to extend terms to 2007 with the exceptions of Colin Campbell and Juan Reynolds whose names are removed. Brian Chabot, Steve Childs, Gary Graham and Michael Girard are to be added to the Associate List 2007.

Proposed by: Avard Bentley

Seconded by: Rick Marsh

Action: Passed

President Roger Sage appointed Gary Graham as the new chair of newsletter committee. Gary will replace Joe Polak.

Tim Perkins talked about building an additional facility at Procter Research Center. This facility would have the ability to test large equipment in a controlled setting. The building will cost approximately \$60,000.00.

Resolution: Be it resolved that the NAMSC will support the UVM Procter Research Center, VT plan to build an additional facility with the goal of furthering research for the maple industry.

Proposed by: Jim Sampson

Seconded by: Ron Wenzel

Action: Passed

Michael Girard invited anyone who has a special talent or expertise to step forward and help with the implementation of our Strategic Plan. There are many association members and friends who have the resources to help and their volunteer services are welcome.

Motion: Adjourn

Proposed by: Dick Schorr

Seconded by: Jean Maday

Action: Passed

Warren Wells received the NAMSC recognition award for outstanding service to the Council and the maple industry. Maple Hall of Fame inductees will be Hank Peterson and Bill Robinson. The IMSI International Syrup Contest winner was Turkey Hill Sugar Bush and the Gift Shop Award went to Richard's Maple Products. Russ Davenport was honored with the Lynn Reynolds Leadership Award.

There were 85 entries in the NAMSC maple syrup and sugar contest.

LIGHT AMBER

1st Mapleland Farms, Dave Campbell, Salem, NY

HM Lyonsville Sugarhouse, John and Janine Stockin, Accord, NY

HM Ron's Pure Maple Syrup, Ron Thomas, Rose City, MI

MEDIUM AMBER

1st Green's Sugar House, Jason Green, Poultney, VT

HM Steven's Sugarhouse, Gerard Stevens, Thetford Center, VT

HM Clute's Maple Products, Lane and Kathy Clute, Naples, NY

DARK AMBER

1st Davenport Sugarhouse, Russ and Martha Davenport, Shelburne, MA

HM Goodell Farms, Frank and Virginia Goodell, Mantua, OH

HM Flyway Farm, Terry Laubish, Medina, NY

MAPLE CREAM

1st Ron's Pure Maple Syrup, Ron Thomas, Rose City, MI

HM Steven's Sugarhouse, Gerard and Sandy Stevens, Thetford Center, VT

HM Valley Road Maple Farm, Ralph Senecal and Mike Hill, Thurman, NY

MAPLE CANDY

1st Mapleland Farms, Dave Campbell, Salem, NY

HM Flyway Farm, Terry Laubish, Medina, NY

HM Valley Road Maple Farm, Ralph Senecal and Mike Hill, Thurman, NY

BEST OF SHOW FOR ALL MAPLE PRODUCTS:

Greens' Sugar House, Jason Green, Poultney, VT

An auction the final evening raised \$2700.00. Much spirited bidding on old sap buckets and spiles kept things interesting. Also, t-shirts, hats, tubing, jugs, a carved loon, a maple print, maple trees and a rocking chair were sold.

The 2005 Annual meeting of the NAMSC will be held October 23 - 26 at the Delta Hotel in Three Rivers, Quebec.

Respectfully Submitted,

Joe Polak, Secretary/Treasurer



Delancey, N.Y. 13752
Phone: (607) 746-6215
Fax: (607) 746-8367
www.catskillmountainmaple.com

Your Full Service Maple Syrup Equipment Distributor

**In Stock: Jugs, Tubing, Glass Containers, Bottlers, Evaporators and Much More
Distributor for WATERLOO SMALL USA**

Now Offering Tubing Installation Service We have teamed up with, **COREYS
MAPLE SERVICES** to offer a tubing renovation and installation call us for details.

IN STOCK new 2' x 6' and 20" x 66" wood fired evaporators, bottling units, filters, tubing, jugs, cans, glass containers and much more.

Give us a call and check out our equipment rental list.

For updates check: www.catskillmountainmaple.com

NOW HANDLING SUGARING EQUIPMENT MANUFACTURED

BY CDL AND TUBING FROM IPL

USED EQUIPMENT

3' x 8.5' Grimm SS pans wood fired w/hoods — \$2995.00

**4' x 13' oil fired evaporator with pre heater and new set of SS pans —
\$8950.00**

5' x 12' Leader wood fired evaporator SS syrup pan, tin flue pan — \$1650.00

**2 1/2" x 8' Waterloo oil fired evaporator with piggyback, extra syrup pan
and hood — \$4900.00**

Leader 1/2 Pint, 2 years old — \$600.00

3 1/2' x 8' Pre heater stainless steel — \$900.00

Stainless steel syrup pans 4' x 3' and 4' x 5' — \$300 & \$500

**6' x 13 1/2' and 5' x 16' wood chip burner evaporators with pre heaters
stainless steel pans — \$3500.00 each**

**15th ANNUAL HEBRON
MAPLE FESTIVAL
March 12 & 13, 2005
10:00 a.m. - 4:00 p.m.**

Connecticut's only Maple Festival presents a family weekend of maple related activities in Hebron. Enjoy self-tours to six maple sugar houses, see how maple is made, how to use and enjoy it.

There is much more, so you must plan to come and experience a weekend of "Maple Good Times" with mom, dad, friends, grandparents, aunts & uncles and all the children. Something for everyone.

Schedule of events and locations may be obtained at most Hebron businesses or visit webpage:

www.hebronmaplefest.com
or E-mail: ccyr1@juno.com

Hebron, Connecticut, Route 66 & 85. "Blizzard" date: March 19th and 20th.

**NAMSC/IMSI ANNUAL
MEETING 2005
October 23-26, 2005
Delta Trois-Rivieres Hotel
1620, rue Notre-Dame
Trois-Rivieres (Quebec)
Canada G9A 6E5**

All room reservations must be done with the Reservation Center of the Tourism Office of Trois-Rivieres which will dispatch your reservation to the hotel. If the Delta Hotel has no room available, you will be referred to another hotel not too far away in order to benefit from the shuttle service.

Specify name of group:

MAPLE 2005

(800) 313-1123 (ext. 224)

(819) 275-1122 (ext. 224)

fax: (819) 375-0022

coordination.tourisme@v3r.net

For more information, contact the organizing committee:

(819) 362-3241 (ext. 238)

fax: (819) 362-2830

bellise@citadelle-camp.coop

**REGISTRATION DETAILS WILL
FOLLOW EARLY IN 2005**

**THE MAPLE
SUGARING STORY**

*About a Proud Tradition of
Northeastern North America*

Video Illus. Guide

30 minutes 90 pages

\$29.95 Ppd.  \$5.50 Ppd.

**INTERNATIONAL AWARD-WINNING
VIDEO TAPE**

Please add 6% Sales Tax for Vermont addresses
Checks, in U.S. funds to

PERCEPTIONS, INC.

**1030D Hinesburg Road,
Charlotte, Vermont 05445**

Visa/Mastercard 802-425-2783

Fax 802-425-3628 • email PerceptiVT@aol.com

SUGAR RIDGE MAPLE FARM

*Located at Dave's Archery and
Sports Center*

**5972 Rt. 11 - Homer, NY 13077
JUST OFF INTERSTATE 81**

OFFERING A FULL LINE OF MAPLE
SUGARING EQUIPMENT
AND SUPPLIES

**Marcland Draw-off Dealer
Maple Syrup and Products**

CALL 607-749-5714 OR STOP BY

WISCONSIN'S MAPLE SYRUP MAKER OF THE YEAR CHOSEN

The couple that we are honoring as "The Syrup Makers of the Year", have been making maple syrup and have been members of our association for many, many years.

He was making maple syrup as a child, and as with the rest of us, it is still in his blood and now hers. As with many of us, they keep getting bigger and bigger. Syrup was first made in a pan on the stove, then to a flat pan out in the woods. A few years later, a small evaporator and a couple hundred more taps. Then comes more taps, buying sap, a larger evaporator, an RO, bottling room, sales room, and of course this means a

larger building, then an addition and on and on it goes.

Ideas keep forming as to how to sell syrup and as with a lot of us, they hold an open house during the season with maple sundaes. They go to craft shows, flea markets, and make gift boxes. Their maple syrup is also sold year round from their home, grocery stores and mail order.

This is kind of where I give it away as to who this couple is. I believe that at the present time, their operation is using an oil fired 6' x 16' Leader evaporator, a Small Brothers pre-heater, an RO, and have a syphon filler for bottling. There are not too many producers that I know of who furnish spiles, pails, covers and gathering tanks to the people they buy the sap from. Congratulations to Linda and Allen Hustad from Cumberland, Wisconsin for being chosen maple syrup makers of the year.

**MAPLE SYRUP
AND SUGAR LABELS**

Show the quality, increase the value of your products with quality customized labels

Choose from 4 colorful designs and 2 shapes,
Nutrition facts, bar code labels,
gift tags & more...

Order quantities of 500 and up.

For more information see our website
or contact Diane at:

Techni-Flex, Inc.®
P.O. Box 1075 • Appleton, WI 54912
Phone (920) 757-0155 • Fax (920) 757-0160
e-mail - diane@techni-flex.com
www.techni-flex.com

WE ACCEPT

Happy Holidays and a Prosperous Sugaring Season

Happy Holidays from Leader Evaporator

18 Gallon Water Jacketed Canning Unit

A Canning Unit designed for sugar makers, and small syrup packer who want better temperature control when canning. The unit has amazing features listed below:

- Comes complete with a S/S Stand and adjustable shelf
- Includes a Glass sight level with valve
- Includes a 3000 watt heating element
OPTIONAL 5000 watt element
- Syrup outlet in the bottom of the inner tank for complete drain
- Dial Thermometer Fitting Included
- Optional 16 x 24 Filter Rack

NEW FOR 2004/2005

**Contact Your Local Distributor, Dealer, Agent or a Leader
Sales Representative for more Details!!!**

ULTRA FLEX 5/16 TUBING

This new all season tubing is designed primarily for use as a drop line material, however is capable of being installed as lateral tubing in a year round installation. The semi-rigid tubing has more stretch, and is easier to put onto fittings. Ultra Flex is transparent and white in color. This reduces the amount of sun-light drawn, and keeps the lowest sap temperature possible. The tubing comes 500 feet per bag.

NEW FOR 2004/2005



25 Stowell Street
St. Albans, VT 05478
802-524-4966

2 Pine Street
Rutland, VT 05701
802-775-5411

www.LeaderEvaporator.com



2005 Maple Research

The North American Maple Syrup Council at its Annual Meeting at Lake George, New York approved funding for the following research projects in the upcoming year.

UNIVERSITY OF VERMONT

- Effects of Three Sugarbush Management Techniques on Major Forest Insect Disease Pests

ONTARIO MINISTRY OF AGRICULTURE

- Use of Defoamers in the Maple Industry
- Evaluation of Sap Filters

CORNELL UNIVERSITY

- Improving Growth of Sugar Maple

Voluntary donations of “A PENNY FOR EVERY CONTAINER YOU FILL” helps continue research in tree health, insect infestation, syrup production, product quality, packaging, marketing, syrup adulteration and a host of other concerns vital to the maple industry. Donations can be made through your plastic, glass or metal container suppliers or you can send your contributions direct to us.

Please note that Kay Carroll of Brookside Farm II has been appointed the new Treasurer of the Research Fund with Mike Girard’s appointment to NAMSC Coordinator. Kay’s contact information is listed below.

For more information regarding the Research Fund contact:

Richard P. Norman, Chairman, 387 County Road, Woodstock, CT 06281
Phone 860 974-1235, Email: r.norman@snet.net

Kay Carroll, Treasurer, 79 East Chestnut Hill Road, Litchfield, CT 06759
Phone 860 567-3890, Email: kaycarroll@aol.com

The NAMSC-Research Fund is a non-profit, volunteer managed committee of the North American Maple Syrup Council, Inc. (12-04)

Contributions to the NORTH AMERICAN MAPLE SYRUP COUNCIL RESEARCH FUND Contributions from 9/1/03 to 8/31/04

The North American Maple Syrup Council would like to extend their thanks to those who have contributed to the NAMSC - Research Fund through the "PENNY PER CONTAINER" program from September 1, 2003 to August 31, 2004.

Contributions can be made through your container manufacturer or supplier or sent directly to the North American Maple Syrup - Research Fund in care of Kay Carroll, Treasurer, 79 East Chestnut Hill Road, Litchfield, CT 06759. Phone: 860-567-3890, E-Mail: kaycarroll@aol.com. Please make checks payable to: NAMSC - RESEARCH FUND.

25,000 Gifts Inc. Queechee Gorge Gifts
White River Jct., VT
Adirondack Container Co., Castorland, NY
Adirondack Maple Co., Fonda, NY
Alden Dana, Hartland, VT
Atkins Fruit Bowl, Amherst, MA
Bacon Jug Company, Littleton, NH
Bailey's Maple Syrup, Storrs, CT
Bascom's Sugar House, Alstead, NH
Bean Hill Farm, Northfield, NH
Bean's Maple Distillery, West Whately, MA
Bear Run Tree Farm, Aurora, WV
Beckwith Maples, Rome, PA
Berkshire School, Sheffield, MA
Berliner Plastics, Lake Luzerne, NY
Black Creek Farms, Croghan, NY
Blue Heron Farm, Charlemont, MA
Bluff Gardens, Inc., Harbor Springs, MI
Boyden Valley Farm & Wine, Cambridge, VT
Bradway Sugarhouse, Stafford Springs, CT
Bragg Farm, E. Montpelier, VT
Breakneck Ridge Farm, Blanchard Twp, ME
Breeneman's Maple Syrup,
Salisbury PA
Broadview Maple Farm, Lyndonville, VT
Brookledge Sugarhouse, Whately, MA

Bureau's Sugar House, Old Lyme, CT
Burman Maple Products, Thompson, PA
Button's Maple Products, East Freetown, NY
C & C Sugar Bush, Pengilly, MN
Calvin Innes, Stafford Springs, CT
Catskill Mountain Maple, Delancey, NY
Charles Drake, Windsor, CT
Charles Grant/Amgraph Packaging
Versailles, CT
Charles Wagner, Chrivitz, WI
Charlies Sugarhouse, Greene, RI
Cook Street Sugarhouse, S. Windsor, CT
Cornell University, Ithaca, NY
Countryside Hardware, DeRuyter, NY
Dad's Sugarhouse, Hebron, CT
Dale Young, Granby, CT
Davenport Maple Farm, Shelburne Falls, MA
David Leff, Collinsville, CT
Dix Family Sugarhouse, Jacksonville, VT
Donald Dodd, Niles, MI
Dudley Harrison, North Branford, CT
Elk's Sugarhouse, Guilford, CT
Elsie's Daughter, Huntington, VT
Endless Mt. Cabin, Rome, PA
Fideldy's, Cohasset, MN
Fitch Pharm Farm, Ashland, OH
Flaherty's Maple Products, Cooksburg, PA
Flyway Farm, Medina, NY
Funk Grove Maple, Shirley, IL
Gillespie, Waterville, VT
Girard's Sugar House, Michael Girard,
Simsbury, CT
Goodrich's Sugar House, Cabot, VT
Green Mt. Sugar House, Ludlow, VT
Haigh's Maple Syrup & Supplies,
Bellevue, MI
Hamley's Maple Farm, Barton, NY
Hardwick Sugar Shack, Hardwick, MA
Harold Cable, Morris, CT
Herb Crates & Co., Arlington, OH
Hidden Pond Sugarhouse, Ron Kasulaitis
Simsbury, CT
Hillside Plastics, Inc., Mr. Chris Russo,
Turners Falls, MA
Hillside Plastics, Inc., Mr. Richard Haas,
Turners Falls, MA
Hilltop Boilers, Newfield, ME
Houston's Sugarhouse, Cabot, VT
Indian Meadow Farm, Bethlehem, CT
Indian Mission Enterprises, N Federal Dam,
MN
Ioka Valley Farm, Hancock, MA
Ivan Puffenbarger, Blue Grass, VA
James Woodrow, Hermon, NY
Jed's Maple Products, Westfield, VT

Joe Tomanek, Smithsville Flats, NY
 Joel Afdahl, Baldwin, WI
 Johnson's Pure Maple Syrup, Orange, MA
 Junita College, Huntingdon, PA
 Justis Asthalter, Parksville, NY
 K.E. Farm and Sugarhouse, Sturbridge, MA
 Kasulaitis Farm & Sugarhouse,
 New Hartford, CT
 Kinney Maple Supplies, Thorndike, ME
 Kivela Sugar Bush, Brantwood, WI
 Klaiber Hardware, Wattsburg, PA
 Lansing Burdick, Stephentown, NY
 Lead Mine Sugar Shack, St. George, WV
 Leader Evaporator Company, Inc., Mr. Gary
 Gaudette, Pres., Saint Albans, VT
 Leonard's Sugar House, N. Canton, CT
 Loch's Maple Syrup, Springville, PA
 Longview Forest Products, Hancock, NH
 Lookaway Farm, Springfield, VT
 LSP Promotions, New London, NH
 Lucerne Maple Products, Tim Littlefield
 East Holden, ME
 Malcom McKenzie, Naples, NY
 Mance's Tree Farm, Shaftsbury, VT
 Maple Acres, Kewadin, MI
 Maple Hill Farm, Cobleskill, NY
 Maple Producers Association of Nova
 Scotia, Westchester Station, NS
 Maple Syrup Prod. Assn. of Connecticut,
 Hebron, CT
 Maple Syrup Supplies, Pottersville, MI
 MapleCrest, Underhill, VT
 Markem Corp., Keene, NH
 Marquardt Tree Farm, Tigerton, WI
 Martin Stone, Lake Placid, NY
 Massachusetts Maple Producers Assn.,
 Ashfield, MA
 Massachusetts Maple Producers Assn.,
 Chester, MA
 McLaughin Vineyards,
 Sandy Hook, CT
 McLure's Honey & Maple, Littleton, NH
 Merck Forest & Farmland, Rupert, VT
 Merle Farms, Attica, NY
 Milroy Farms, Salisbury, PA
 MKS Enterprises, Inc., Norwood, NY
 Moonlight Maple Co., Mt. Vernon, ME
 Morse Farm Maple Sugarworks,
 Montpelier, VT
 Muscle in Your Arm Farm, Etna, NY
 N.G.M. Insurance Co., Keene, NH
 Native Harvest, Ponsford, MN
 NH Maple Prod. Assoc., Alstead, NH
 Niese's Pure Maple Syrup, Putnam Valley, NY
 Nod Road Sugarhouse, Avon, CT
 Norman's Sugarhouse, Woodstock, CT
 Norris Sugarworks, Starksboro, VT
 North American Maple Syrup Council, Inc.,
 Merrill, WI
 North Country Corp, Cambridge, MA
 North Hadley Sugar Shack, Hadley, MA
 Northern Retreat, Albany Township, ME
 Northern Wisconsin Maid, Park Falls, WI
 Northfield Mt. Herman School,
 Northfield, MA
 October Farm, Rumson, NJ
 Oliver Scranton, Guilford, CT
 Ontario Maple Prod. Assoc., Rosemont, ON
 Osborn Family Sugarhouse,
 Boscawen, NH
 Owens Boys Sugar House, Stewartstown, NH
 Passardi Maple Products, Willington, CT
 Patterson Fruit Farm, Chesterland, OH
 Paul Smith College, Paul Smiths, NY
 Pearl & Son, Loudon, NH
 Pomeroy Sugarhouse, Westfield, MA
 Potter-Tioga Maple Producers.,
 Mainsburg, PA
 R.T. Hunt Associates, Hensonville, NY
 Rathbun's Maple Syrup, Whitehall, NY
 Red Bucket Sugar Shack, Worthington, MA
 Richard & Avis Norman, Woodstock, CT
 Richard's Maple Products, Chardon, OH
 Rick's Sugarhouse, East Hampton, CT
 Robinson, Bill & Suzanne, Auburn, ON
 Rock House Maple, Easton, CT
 Russell's Maple Farm, Rome, PA
 Schoonmaker, Winsted, CT
 Simcoe and District Maple Syrup Prod.
 Assoc., Rosemont, ON
 Simscroft-Echo Farms, Michael Girard,
 Simsbury, CT
 Skunk Hollow Farm, Stowe, VT
 Smith's Maple Products, Skowhegan, ME
 Somerset County Maple, Salisbury, PA
 Southface Farm, Tom McCrumm,
 Ashfield, MA
 South Meadow Farm, Lake Placid, NY
 Southern Maine Maple Sugarmakers
 Assn., Gorham, ME
 Spragues Maple Farms, Portville, NY
 Spring Hill Sugar House, West Kingston, RI
 Stafford Hollow Sugar Shack,
 Stafford Springs, CT
 Stanford Museum & Nature Center,
 Stanford, CT
 Stonewall Farm, Keene, NH
 Strawberry Hill Farms, Skowhegan, ME
 Sugar Bush Creek Farm, Middlefield, OH
 Sugar Bush Supplies, Mason, MI

Sugar Tree Country Store, McDowell, VA
 Sugar Bush Farm, Woodstock, VT
 Sugarwoods Farm, Glover, VT
 Sunnyside Maples, Gilmanton, NH
 Sunridge Maple Sugar House,
 Sunridge, ON
 Sweet Retreat, Northfield, VT
 Sweet Sue's Sugar Shack, Thompson, CT
 Sweetridge Maple Shop, Forestville, NY
 The Bacon Jug Company/Gamber
 Container, Inc., Lancaster, PA
 The Corse Farm, Whitingham, VT
 The Sugar Shack, Millinockett, ME
 The Warren Farm & Sugarhouse,
 N. Brookfield, MA
 Thomas Bell Lumber, Riverton, CT
 Toad Hill Maple Farm, Athol, NY
 Top Stone Farm, West Redding, CT
 Two Brothers Maple Syrup, Columbia, CT
 Vallee Farm, St. Albans, VT
 Vande Bunte Maple, Hudsonville, MI
 Vermont Maple Outlet, Jeffersonville, VT
 Vermont Maple Sugar Makers Assoc.,
 Montpelier, VT
 Vermont Syrup Works, Norwich, VT
 Warren & Marion Wells, Nassau, NY
 West Farm, Amston, CT
 Wettemann Farm, Guilford, CT
 Wildwood Farms, David Wentworth,
 Gonvick, MN
 Williams Farm, Inc., Deerfield, MA
 Wolcott Maple Equipment, Dale, NY
 Wood Homestead Maple, Stamford, NY
 Yatzor's Maple Products, Edinboro, PA

Sugar Bush Supplies Co.

2661 Okemo Road
 Mason, MI 48854
 (517) 349-5185
 sbfarms@tbs.net

*We have everything
 for your sugaring needs --*
12 tappers drilling
11 spiles-a-dripping
10 buckets filling
9 miles of tubing
8 pumps-a-pumping
7 tanks o'erflowing
6 pans-a-boiling
5 test cups, too
4 filter tanks
3 syrup drums
2 candy molds
and a complete
line of jugs,
glass and cans.

*Wishing you a
 happy holiday
 and a prosperous
 sugaring season!*



Justus Asthalter Maple Syrup and Equipment

*Servicing the New York, New Jersey
 and Pennsylvania Maple Industry
 for over SIX DECADES*

**Dealer for: Leader • Grimm •
 King Evaporators • Sugar Hill •
 Lamb Tubing — New and used
 equipment in Stock**

**Glass • Cans • Jugs • Spiles •
 Tubing • Buckets**

Delivery Available

850 Aden Road • Parksville, NY 12768

(845) 292-8569

Our Heritage Is Maple Sugaring

*Call today for new and used maple equipment.
Bulk maple syrup and used equipment may be
accepted in trade toward equipment.*



DECEMBER SPECIALS

- | | |
|--|---------|
| 16" x 54" Darveau oil fired evaporator w/stainless pans, stainless arch (insulated) and oil burner | \$ 850 |
| 2' X 6' Dallaire evaporator w/stainless pans | \$2,200 |
| 2' X 8' Drop flue evaporator w/stainless pans | \$2,300 |
| 2 1/2' X 8' Grimm oil fired evaporator w/insulated arch, oil burner, stainless pans & preheater | \$3,200 |
| Over 40 used hobby size stainless pans in stock (14" to 30" wide X 12" to 72" long) | |

CALL FOR SIZES AND PRICE

- | | |
|---|---------|
| 500 Gallon Zero vacuum tank, stainless | \$1,100 |
| Delaval Model #75 vacuum pump w/2HP motor | \$ 450 |
| Vertical double vacuum releaser | \$ 700 |



56 Sugarhouse Road
Alstead, NH 03602
603-835-6361

FAX 603-835-2455
www.bascommapple.com

COMING EVENTS

NEW YORK STATE MAPLE PRODUCERS CONFERENCE

January 7 and 8, 2005

Vernon-Verona-Sherrill Central School, Verona, NY

For more information contact:

Keith Schiebel at (315) 829-2520

NEW HAMPSHIRE MAPLE PRODUCERS ASSOC. ANNUAL MEETING

January 29, 2005, 10:00 a.m. to 3:00 p.m.

Elks Lodge, Heater Rd., Lebanon, NH

For more information contact:

Betty Messer (603) 353-4883 or www.nhmapleproducers.com

FEBRUARY 10-12, 2005

North American Farmers' Direct Marketing Conference and Trade Show, Boston Park Plaza Hotel, Boston, MA. In addition to educational sessions, outstanding speakers and a diverse trade show, the conference offers a three-day pre-conference bus tour, a day of workshops and a two-day post-conference bus tour. For information, visit the Web site at www.nafdma.com, e-mail info@nafdma.com, or call (413) 529-0386. Registration begins Nov. 1. Pre-resignation deadline is Jan. 6.

MAPLE SYRUP FESTIVAL

March 12-13, 2005

Warkworth, Ontario, Canada

For more information contact:

Alice Potter Tel: (705) 924-2057 Fax: (705) 924-1673

15TH ANNUAL HEBRON MAPLE FESTIVAL

March 12 & 13, 2005, 10:00 a.m. to 4:00 p.m.

For more information contact:

www.hebronmaplefest.com or E-mail: ccyr1@juno.com

NEW YORK STATE MAPLE TOUR

July 17, 18, 19 2005

The Batavia Holiday Inn, Batavia, New York

For more information contact:

Greg Zimpfer (585) 591-1190 or Stephen Childs (585) 786-2251

NAMSC/IMSI ANNUAL MEETING 2005

October 23-26, 2005

Trois-Rivieres, Quebec

For more information contact:

(819) 362-3241 X238, (819) 362-2830, bellise@citadelle-camp.coop

CLASSIFIED

FOR SALE: Used oil burner Beckett CF 2300, 7-20 gph. very good condition. \$1,095. Used stainless syrup pan, 5' x 3' Grimm-lightning. \$750. ALSO: Carageenan for maple jelly, 1 1/2 lbs. or \$19.95 or \$25.00 shipped - recipe included. Baker's Maple, P.O. Box 23, Bainbridge, NY 13733. (607) 967-7229.

FOR SALE: Evaporator **NEW**, still in packing crates, 2 1/2' x 8' Grimm Lightning R.H. feed, Soldered pans. \$4,850 **WILL DICKER**. 50 buckets, spouts & covers. (2) 300 gallon poly tanks, clean \$100. (1) 500' roll of 1/2" black plastic (1) roll of 1" blue plastic 300' (1) single cone filter tank like new \$180. (1) 300 gal. SS milk tank \$225. Miscellaneous bottle & jugs. **PLEASE CALL US** (413) 623-6021.

FOR SALE: 7 1/2 bbl. King gathering tank, \$100.00. 7 1/2 bbl. Grimm gathering tank, \$100.00. Double 7" Grimm Filter press. 6' x 10' aluminum steam hood, \$200.00. (315) 376-3654.

FOR SALE: 4' X 12' Grimm wood fired raised flue with stainless steel pans, aluminum hood and pre-heater. 2' x 4' finishing pan on propane, filter tank. Two 600 gal. stainless storage tanks, wood bunks. Can be seen in operation this spring. Central New York. (607) 547-2732.

FOR SALE: 2' x 6' S.S. oil evaporator Darv-Eau, used 2 seasons. Mystique model, complete set up, w/extras. \$4,900. Colchester, CT. (860) 537-9721.

FOR SALE: 2' X 8' Small Brothers S.S. evaporator with preheater hood and forced-air draft, excellent condition, \$2,850. Also, 300 gal. SS bulk tank, Tanaka TCP 381 sap pump, buckets w/covers. (518) 762-8356.

FOR SALE: 10,000 gal. blue glass lined tank \$4,200, 5000 SS tank, jacketed with agitator, \$3,500, 3800 gal. blue glass lined tank on skids \$4,500, other small tanks available. Osmonics RO 7 vessels \$1,800, 7 1/2 HP fluid vac vacuum pump, complete \$1450, Surge 5 HP vacuum pump complete \$500. **Looking For:** Grade B and Commercial Maple Syrup. (518) 853-4022.

IN MEMORIAM

WALTER HUMPHREYS

It is with great sadness we report the death of Walter Humphreys on May 15, 2004. Just a few months after the passing of his beloved wife, Doris, after 67 years of marriage.

Walter was born May 4th, 1914 in Montreal South, Quebec. He graduated from MacDonal College of McGill University. In 1935 with a Bachelor of Science degree in Agriculture. He then commenced farming near Dunham, Quebec and had a 1200 tap maple operation. At Dunham he met Doris Small. A daughter of one of the brothers who made Lightening Evaporators. Doris and Walter had three children, two sons and a daughter and four grandchildren.

In 1945 Doris and Walter moved to Barrie, Ontario where he went into partnership in an apple orchard. In 1953 Walter joined the Ontario Department of Agriculture as a fruit and vegetable inspector. In 1966 he was asked to become Ontario's Forest Maple Specialist. A job he held until his retirement in 1974. Also in 1966 he became secretary/treasurer of the newly formed Ontario Maple Syrup Producers Association.

In 1974 Walter received the Ontario Maple Syrup Award. In 1975 Walter accepted a two year assignment in Nova Scotia as their first maple specialist.

On May 15, 1982 Walter was inducted into the Maple Hall of Fame at Crogan, New York, Walter was the first Canadian to achieve this honor. Walters' no nonsense demeanor did not take away from his dedication to family, friends, church and maple. His presence in the maple industry is greatly missed.

LEADER EVAPORATORS

New and Used

LAMB TUBING SUPPLIES

SUGARHILL CONTAINERS

ORDER EARLY & SAVE

ROGER C. SAGE

4449 SAGE ROAD
WARSAW, N.Y. 14569
Tel: 585-786-5684

WEST MINOT SUGARHOUSE

Dealer for Waterloo/Small

We have a

Large Inventory Available

New & Used

We Have "Maine" Plastic Jugs

Wayne & Joni Slattery
Rt. 119, West Minot, ME
1-207-966-3643

SUBSCRIPTION FORM

THE MAJORITY OF THE STATE ASSOCIATIONS INCLUDE
THE MAPLE SYRUP DIGEST WITH YOUR DUES PAYMENT.
PLEASE CHECK WITH YOUR ASSOCIATION
TO SEE IF YOU WILL AUTOMATICALLY
RECEIVE THE DIGEST WHEN YOU PAY YOUR DUES.

I would like to subscribe to the MAPLE SYRUP DIGEST

USA () 1 Year \$5.00

CANADA () 1 Year \$7.00

PLEASE REMIT IN US FUNDS

This is a: () new () renewal subscription

Name _____

Address _____

Make checks payable to Maple Syrup Digest and Mail to:

MAPLE SYRUP DIGEST
PO BOX 240, CANTERBURY, NH 03224
(603) 783-4468

**BE SURE TO SEND US YOUR CHANGE OF ADDRESS
THE POST OFFICE *WILL NOT* FORWARD BULK MAIL!**

DEADLINE
FOR
NEXT
ISSUE

JANUARY 3,
2005

IF YOUR
MAILING LABEL
READS
SD04

Subscription ends December 04

THIS IS
YOUR LAST PAID ISSUE

Please renew your subscription

sugarhill[®]

CONTAINERS



P.O. Box 490 • 262 Millers Falls Road
Turner Falls, MA 01376
Phone: 413-863-222
Fax: 413-863-3774
www.hillsideplastics.com

“The Plastic Bottle People”